



HERA



INDEX

THE CITY DUBAI	2
ABOUT DUBAI SPORTS CITY	4
INTRODUCTION	6
DUBAI CANAL	7
ELS GOLF CLUB	7
LOCATION	8
IDEALLY PLACED	10
YOUR INTERIOR SPACE	12
THE KITCHEN	12
COMMUNITY HIGHLIGHTS	14
TOWER HIGHLIGHTS	14
SHOPPING & RETAIL	16
SCHOOLS & EDUCATIONAL INSTITUTES	17
HEALTH SERVICES	17
PAYMENT PLAN	18
TYPICAL FLOOR PLATE	20
STUDIO	22
1 BEDROOM	24
2 BEDROOM	26

THE CITY DUBAI

Ever since 1971, Dubai has quickly established itself as a force to be reckoned with. It has set itself as the ultimate example for a city that's always evolving and constantly on the move for the entire world.

With ambitious projects and bold concepts being unveiled every month, this city is perfect for anyone who

WANTS A PLACE TO CALL HOME.

WANTS A PLACE TO MAKE A NAME.



ABOUT DUBAI SPORTS CITY

Dubai Sports City is a district created for the sports enthusiasts, the fitness trainers and people who generally have the love for the game. Set for completion in 2018, Titans Developers is now launching Mera Towers, a residential complex which is the embodiment of the kind of vigorous living that residents of Dubai Sports City will lead.



INTRODUCTION

Named after the wife of mythological greek god zeus in the times of olympus, hera towers will reflect the similar glory and magnificence for which this character was known for.

Hera towers offers 483 units that consist of studios, 1 and 2 bedroom apartments. The unit sizes and layouts are designed with high end finishes and boast extravagant balconies and terraces.

With amenities that encourage a healthy outlook and units that showcase urban and stylish fittings, hera towers effortlessly combines elegant living with an active, dynamic and social lifestyle making these towers the ideal place to call home for every personality.

- Luxury lobby
- Swimming pool
- Health club steam & saunas
- 24-hour security
- Covered car parking
- Children's playground
- One parking space for each owner
- Unique and quality apartment furnishing
- Large balconies and terraces



DUBAI CANAL

The dhs 2 billion dubai water canal comprises one shopping centre, four hotels, 450 restaurants, luxury housing, walkways and cycle paths. It is a three-kilometre long project starting from business bay into the persian gulf through safra park and jumeirah. The width ranges from 80 meters to 120 meters. It will be six meters deep and be crossed by eight meter high bridges. It will create new public places and facilities with a total area of 80,000 square meters with private marinas for boats and a trade centre at the entrance of the canal.



ELS GOLF CLUB

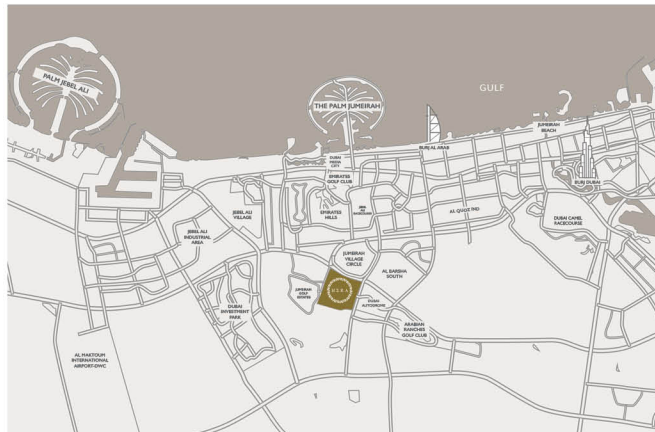
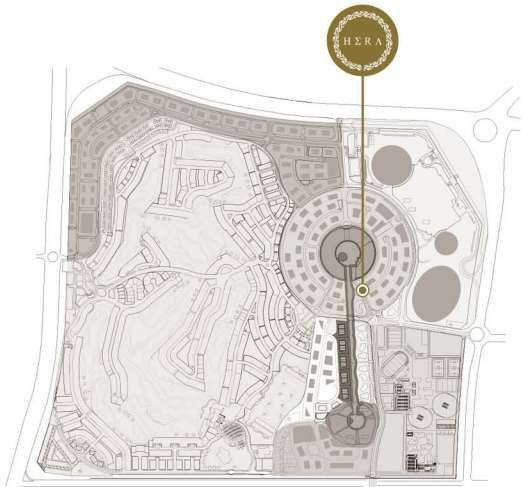
Drawing inspiration from ernie els' lifelong love of links golf, we set about recreating at the els club, dubai some of these design features into a desert landscape. We call it a 'desert links,' featuring undulations and strong elevation changes for visual and strategic interest. Extensive use of dunes, sandy waste areas and native grasses and vegetation between wide fairways, along with a classic style of bunkering, add to the links effect.

At 7,538 yards from the tips this is a test for the best, but four sets of teeing areas means players of all standards can enjoy the challenge. The greenside protection system consists of sculpted bunkers, grassy swales and imaginatively designed greens featuring fine-textured bermuda grass that are conducive to smooth, fast putting surfaces all year round.

The club is also complemented by the state of the art butch harmon school of golf. The school features outdoor full swing, short game and putting areas as well as indoor swing studios, putting studio and gym Work on your game where rory mcilroy, lee westwood and ernie els all work on theirs.

LOCATION

Located just off Sheikh Mohammad bin Zayed Road, Dubai Sport City spans over 50 million sq.ft. and is home to 15,000 people across a thousand villas and six thousand apartments. Dubai Sport City boasts commercial and residential developments in addition to the sporting facilities, world-class medical facilities, leisure opportunities, hotels, international schools, and the next Generation Club. Being the world's first purpose-built sports city, it features many popular Dubai residential communities such as Fortuna Tower, Canal Residence, Victory Heights, and soon enough, Hera Tower.



IDEALLY PLACED

Hera Tower is situated in the heart of new dubai. Located in very lucrative location in the dubai sport city and easily accessible from sheikh zayed road, Hera Tower is close to a host of leisure, shopping, and dining outlets, among other amenities. Hospitals, international air port the distance from key locations:

7-12 MINUTES AWAY FROM

1. Carrefour
2. Motor City
3. Jumeirah Village Circle
4. GEMS National Schools
5. Dubai British School

15-18 MINUTES AWAY FROM

6. Saudi German Hospital
7. American School Dubai
8. Jebel Ali Race Course
9. Ibn Battuta Mall
10. Mall of the Emirates

25 MINUTES AWAY FROM

15. Al Maktoum Airport
16. Expo 2020 Site
17. Palm Jumeirah



YOUR INTERIOR SPACE

Hera Tower feature modern and contemporary fittings in all of its 483 units. The Hera Tower resident will be able to experience the highest level of comfort and relaxation with its spacious layout and design. This residential tower consists of large windows, balconies and terraces to give off a bright and airy atmosphere for all of its residents and visitors.



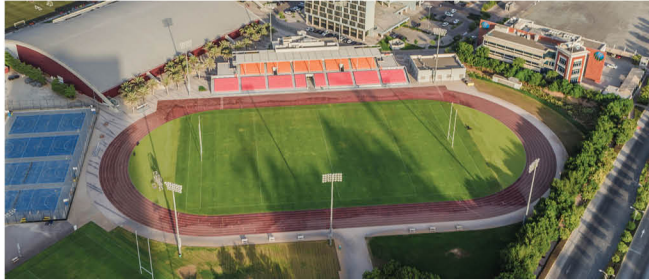
THE KITCHEN

Every home needs a well-equipped kitchen. Hera Tower residents will have modern kitchens that will be fitted with highly efficient appliances. The Hera Tower kitchen units will also feature state-of-the-art light fixtures and cabinet tops to provide residents with ultimate convenience in an urban setting.



COMMUNITY HIGHLIGHTS

- Cricket Stadium – 25,000 capacity
- Field Hockey Stadium – 5,000 capacity
- Indoor Arena – 10,000 capacity
- Multi-purpose outdoor stadium – 60,000 capacity
- The Els Club a Mediterranean inspired clubhouse that feature the finest golf courses.
- Sports Village which feature training and net practices areas for all kinds of sports as well as restaurants and entertainment outlets



TOWER HIGHLIGHTS

- Luxury Lobby
- Swimming pool
- Health club steam & sauna
- 24 hours security
- Covered car parking
- Children's playground.
- 1 parking space for each tenant
- Unique and quality apartment finishing
- Large balconies and terraces
- Dedicated BBQ Area
- Roman Greek style lobby



SHOPPING & RETAIL

There are several shopping and retail options for the residents of Hera Tower and Dubai Sports City with a new mall being built within the area.

- The Arena Mall is in construction and will be situated in the Stadium districts.
- Me'asim City Centre is just 5 minutes away from Dubai Sports City and it consists of a large Carrefour, Centre point, H&M and many other fashion brands, restaurants and entertainment outlets.
- Just 10 minutes away is the Mall of the Emirates which has numerous shopping stores, the top restaurants and also features the world's largest indoor ski resort, Ski Dubai.



SCHOOLS & EDUCATIONAL INSTITUTES

- There are four schools and nurseries in Dubai Sports City, which are Victory Heights Primary School, Wonders Year Nursery, and the upcoming Bradenton Preparatory Academy.
- It's also 15 to 20 minutes away from Knowledge Village and Academic City which is the center for top universities and educational institutes of Dubai.



HEALTH SERVICES

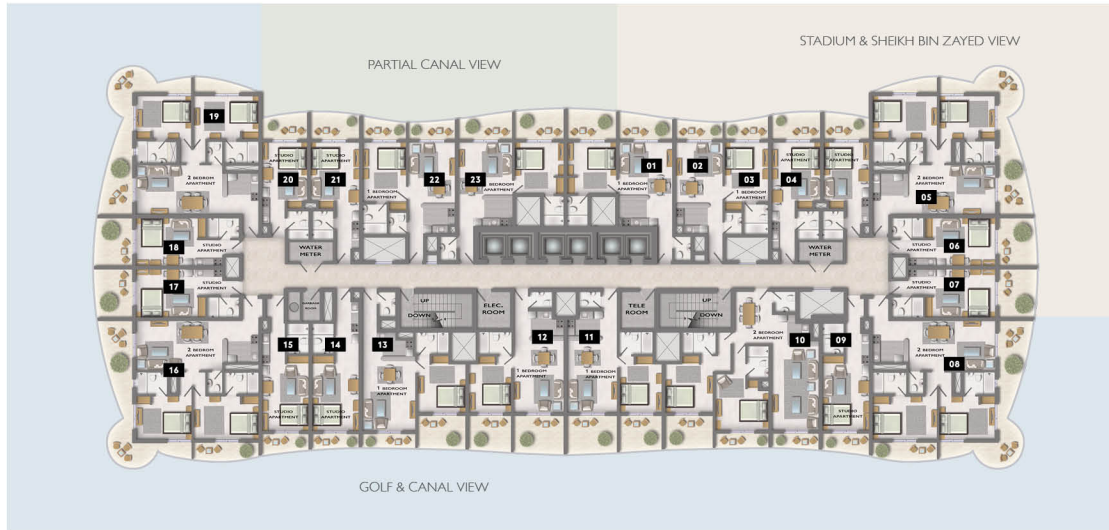
- Health Family Medicine Clinic is the nearest facility within Dubai Sports City.
- It's also 10 minutes away from Saudi German Hospital



PAYMENT PLAN



TYPICAL FLOOR PLATE



STUDIO



TYPE	A - 6,7,17,18
AREA	541.33 sq. ft.



TYPE	B - 14
AREA	530.18 sq. ft.



TYPE	C - 3,21
AREA	529.06 sq. ft.



TYPE	D - 9
AREA	518.00 sq. ft.

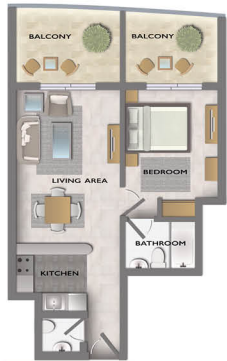


TYPE	E - 15
AREA	512.63 sq. ft.



TYPE	F - 4,20
AREA	449.50 sq. ft.

1 BEDROOM



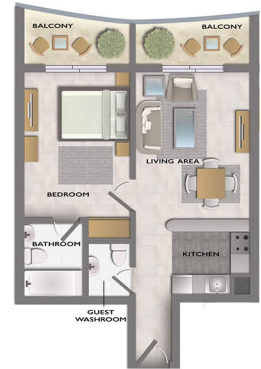
TYPE	A - 11,12
AREA	1,008.94 sq. ft.



TYPE	B - 13
AREA	985.96 sq. ft.

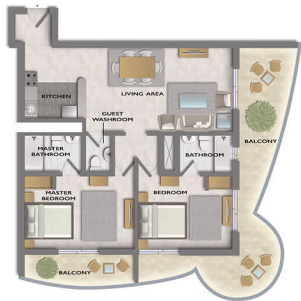


TYPE	C - 1,23
AREA	949.26 sq. ft.



TYPE	D - 2,22
AREA	833.27 sq. ft.

2 BEDROOM



TYPE	A - 8, 16
AREA	1,604.42 sq. ft.

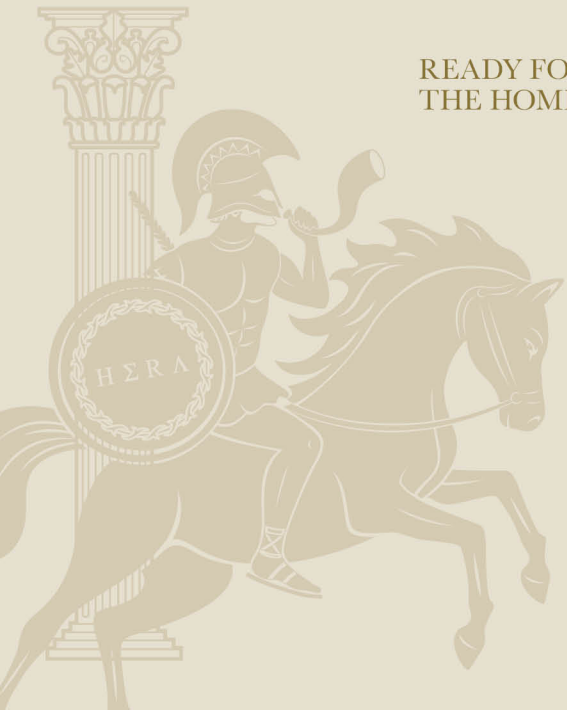


TYPE	BS - 19
AREA	1,563.85 sq. ft.

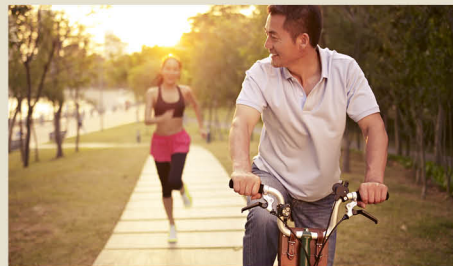


TYPE	C - 10
AREA	1,526.16 sq. ft.

READY FOR
THE HOME GAME?



BRING YOUR TEAM



MAKE A MOVE