

—  
*Where the island*  
**MEETS THE SKY**  
—



**THE PALM TOWER**  
RESIDENCES



---

*The height of luxury*  
**IN THE HEART  
OF PALM JUMEIRAH**

---

The Palm Tower is an awe-inspiring landmark soaring majestically 240 metres from the heart of the world-famous Palm Jumeirah. Discover elegant design, luxury living, a convenient location and access to world-class amenities.

The Palm Tower Residences.  
The Palm. Elevated.



---

*The Palm Tower*

**EXPERIENCE THE  
FINER THINGS IN LIFE**

---

Sophisticated, striking and ambitious, The Palm Tower is a 52-storey five-star hotel and residential development in the heart of Palm Jumeirah. Featuring award-winning architectural design, the tower will be one of Dubai's most prestigious addresses, comprising 432 spacious, elegant apartments and a new five-star hotel, St. Regis Dubai - The Palm.



The iconic tower, inspired by the shape of a palm tree, features outstanding amenities including AURA Skypool and Lounge on the 50th floor with one of the world's largest infinity pools; internationally-renowned SUSHISAMBA restaurant on the 51st floor and The View at The Palm, a public observation deck on the 52nd floor offering panoramic views of Palm Jumeirah, the Arabian Gulf and the Dubai skyline.





*Infinity Sky Pool*

---

## *The Palm Tower Residences*

# **A PRESTIGIOUS RESIDENTIAL ADDRESS**

---

As a primary residence or an investment, these masterfully designed apartments epitomise the Palm Jumeirah lifestyle and offer an elevated living experience in relaxed surroundings.

Situated on floors 19 to 47 of The Palm Tower, every one of the spacious studio, one, two and three-bedroom apartments is fully-furnished to the highest standards. The apartments boast incredible panoramic views of the Dubai skyline, the iconic Palm Jumeirah or the Arabian Gulf.

Elegant interiors along with an array of luxury facilities in the tower, ensures that living in The Palm Tower Residences is as easy, convenient and comfortable as possible.

*View of Palm Jumeirah Fronds*



*View of Dubai Marina*



*View of Jumeirah*



---

*A Choice of Inspiring Views*  
**DISCOVER A UNIQUE  
PERSPECTIVE OF DUBAI**

---

The Palm Tower Residences offers a choice of uninterrupted panoramic vistas.

Breathtaking daytime and night-time views of Palm Jumeirah, the glittering azure waters of the Arabian Gulf, the vibrant towers of Dubai Marina and Ain Dubai, the iconic Burj Al Arab hotel or the world-famous Downtown Dubai skyline – simply choose the view that most inspires you.



---

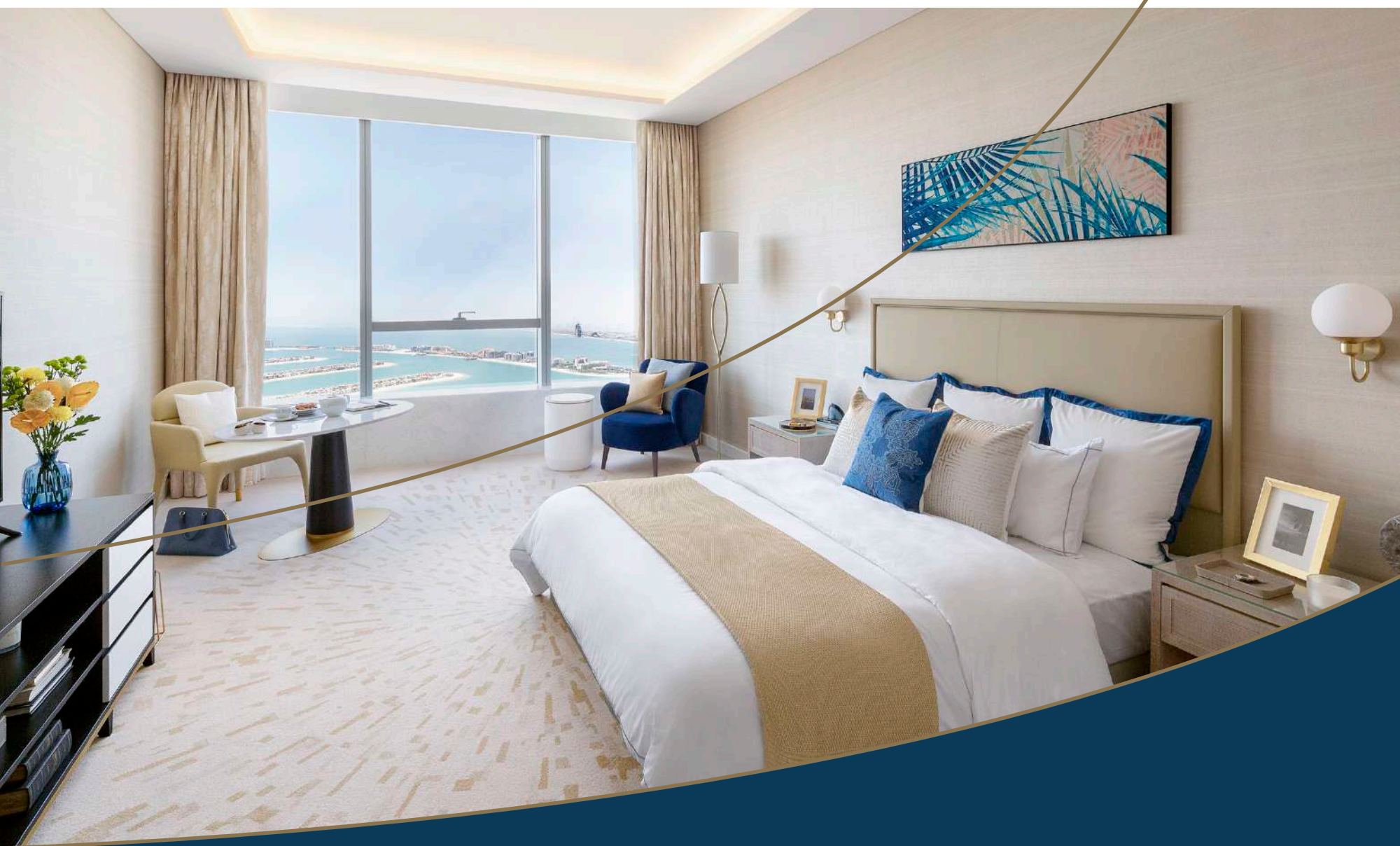
## *The Interiors*

---

Every apartment at The Palm Tower Residences has been designed with clean lines and neutral colours, providing a calm and tranquil environment to enjoy the unsurpassed and impressive views.

Take in the magnificent views from the exclusive, contemporary interiors of your luxury apartment. Carefully curated furniture, premium home appliances as well as high quality finishes and furnishings, create an atmosphere of sophistication and offer spaces that are as functional as they are elegant.





---

## *A Studio View*

---

Spacious studio apartments have been thoughtfully designed, featuring fully-equipped kitchens and refined living spaces with expansive sea views.



---

## *Fine Finishes*

---

Comfortable spaces are enhanced by exquisite finishes and furnishings, creating residences that are timeless and effortlessly elegant.

Every detail of the apartments at The Palm Tower Residences has been meticulously selected to exude glamour and elegance. The neutral colour palette is complemented by luxury flooring, premium fixtures and fittings, that add a touch of sophistication.

NAKHEEL  
MALL

DIRECT ACCESS TO  
NAKHEEL MALL



ST. REGIS HOTEL



THE VIEW  
AT THE PALM



PALM MONORAIL  
ACCESS



PANORAMIC VIEWS OF  
PALM JUMEIRAH



SUSHISAMBA  
RESTAURANT



AMPLE RESIDENTIAL  
PARKING



SPECTACULAR  
LOCATION



OPTIONAL A LA CARTE  
SERVICES BY ST. REGIS



BEACH



SWIMMING POOLS

*Nearby Amenities*



*Fully-furnished studios, one, two and three bedroom apartments*

Apartment	Built-up area
Studio	441 - 599.23 square feet
1 Bedroom	900 - 1,144.53 square feet
2 Bedroom	1,842 - 2,118 square feet
3 Bedroom	2,589 square feet

## Studio



# *The Floorplans* **STUDIO**

The developer reserves the right to make revisions. All the measurements and drawings are approximate. This information is subject to change without notice. Do not scale drawings. Artistic renderings, landscaping and images are for illustrative purposes only and are subject to change without notice. March 2021.

Typical  
One Bedroom



Typical Corner  
One Bedroom



# *The Floorplans* **1 BEDROOM**

The developer reserves the right to make revisions. All the measurements and drawings are approximate. This information is subject to change without notice. Do not scale drawings. Artistic renderings, landscaping and images are for illustrative purposes only and are subject to change without notice. March 2021.

Two Bedroom - Type A



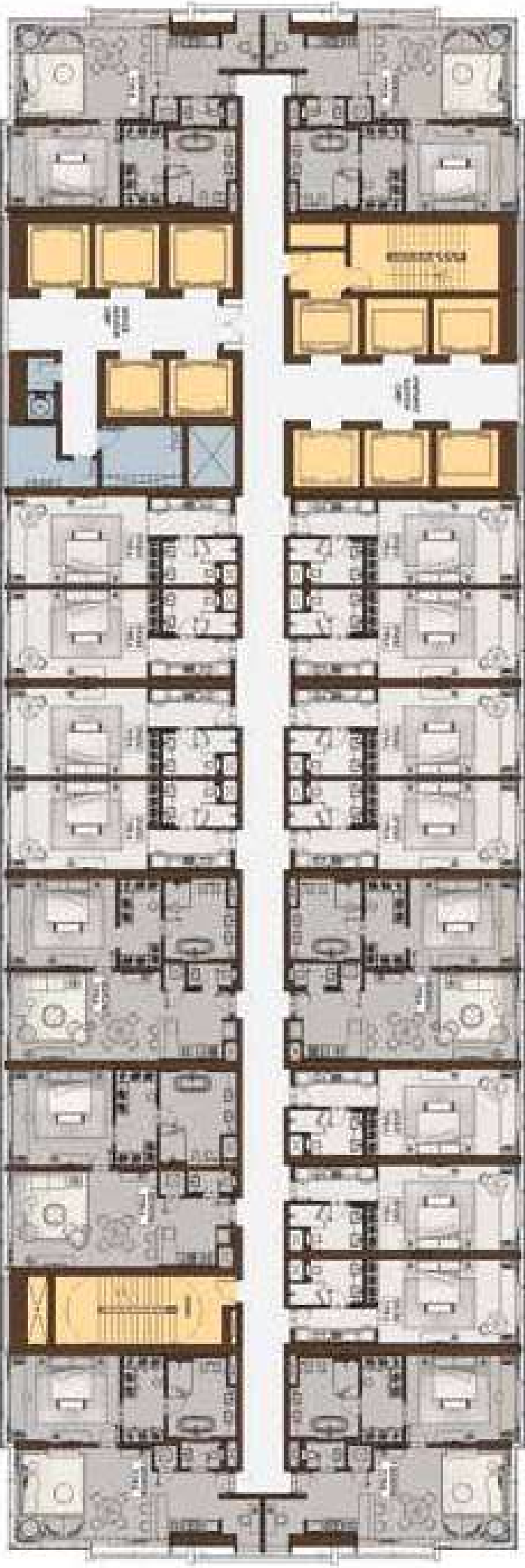
Two Bedroom - Type B



# *The Floorplans* **2 BEDROOM**

The developer reserves the right to make revisions. All the measurements and drawings are approximate. This information is subject to change without notice. Do not scale drawings. Artistic renderings, landscaping and images are for illustrative purposes only and are subject to change without notice. March 2021.

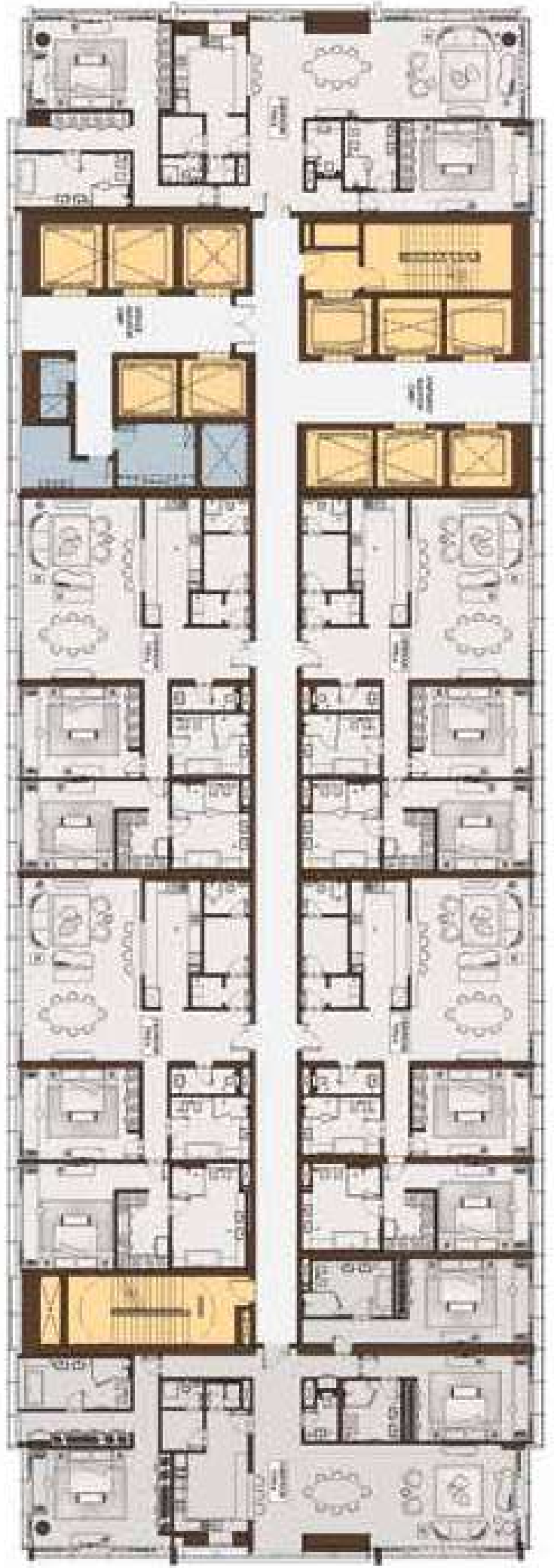
ATLANTIS VIEW



WEST - DUBAI MARINA VIEW

CITY VIEW

ATLANTIS VIEW



EAST - BURJ AL ARAB VIEW

CITY VIEW

- STUDIO/2 BEDROOM
  - COMMON AREA
- 1 BEDROOM/3 BEDROOM
  - STAIRS / ELEVATORS

—  
*Sample Key Plans*  
 —



Booking Amount\*



1st Instalment\*



2nd Instalment\*



3rd Instalment\*



On Handover



Post Handover  
Quarterly



Post Handover  
Quarterly



Post Handover  
Quarterly



Post Handover  
Quarterly



Post Handover  
Quarterly



\*Terms and conditions apply.

*Payment Plan*



---

*Access A Luxury Lifestyle*  
**THE ST. REGIS DUBAI,  
THE PALM**

---

The St. Regis Dubai, The Palm occupies the first 18 floors of The Palm Tower. The hotel consists of 290 rooms and suites with a beautifully designed daylight ballroom, Iridium Spa and Athletic Club and two infinity pools overlooking Palm Jumeirah.



---

## *The Beach Club*

---

The Beach Club, an exclusive beachfront facility nearby with extensive views of the Arabian Gulf, offers a variety of amazing leisure and fitness options, such as the 100-metre long beachfront infinity pool, state-of-the-art gymnasium and a selection of fusion dining concepts.



---

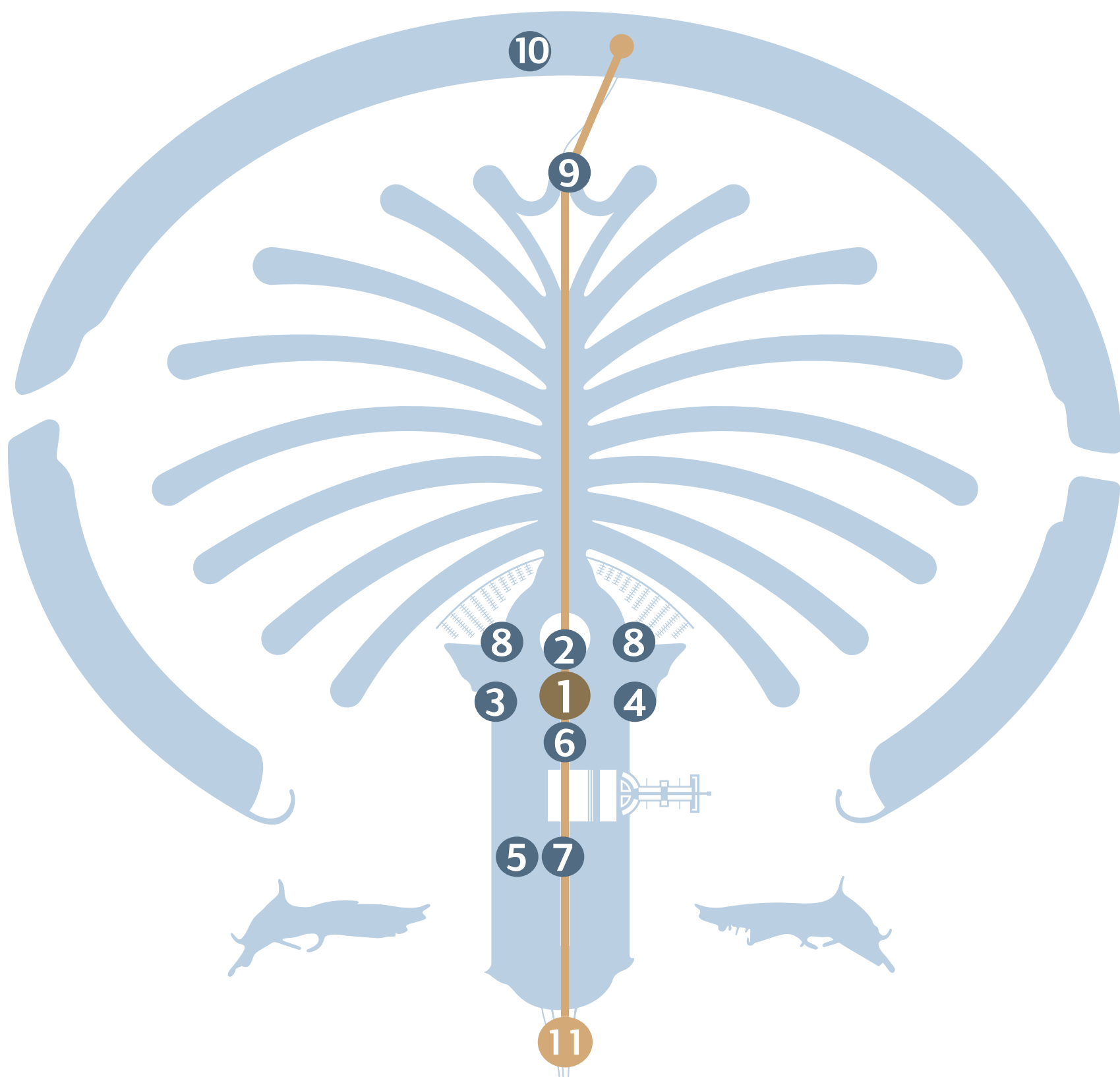
## *Nakheel Mall*

---

An iconic experience in the heart of Palm Jumeirah, Nakheel Mall is the centrepiece of the community. Residents of The Palm Tower will enjoy views of the beautifully landscaped gardens of The Rooftop and can enter the mall via the residences' lobby. The Palm Monorail station at Nakheel Mall ensures convenient transport around Palm Jumeirah for residents.

Nakheel Mall is home to more than 300 shops, restaurants and entertainment offerings, including a 15-screen cinema and other attractions spread over five floors. The Rooftop offers delightful al fresco fine dining, with fabulous views out over Palm Jumeirah.

Nakheel Mall is also the access point for The View at The Palm, a stunning public observation deck, now open on the 52nd floor of The Palm Tower, offering the unique experience of spectacular views, along with an interactive experience about the making of Palm Jumeirah.



- 1 The Palm Tower
- 2 Nakheel Mall
- 3 The Beach Club
- 4 Club Vista Mare
- 5 Palm West Beach
- 6 Al Ittihad Park
- 7 Golden Mile Galleria
- 8 Marina Palm Jumeirah East and West
- 9 The Pointe
- 10 The Boardwalk
- 11 The Palm Monorail

## *Palm Jumeirah*

Palm Jumeirah is home to world-class retail destinations, cafés and restaurants as well as a host of leisure attractions and entertainment venues, offering residents and visitors a unique cosmopolitan experience.



---

## *At Your Doorstep*

---

### THE PALM MONORAIL

The Palm Monorail runs the entire length of Palm Jumeirah, from its entrance to Atlantis The Palm, connecting residents with its many shopping, dining and leisure destinations, as well as providing easy connectivity to the city via the Dubai Tram and Dubai Metro.

### AL ITTIHAD PARK

A dedicated entrance for residents of The Palm Tower, provides easy entry to the tranquil surroundings of Al Ittihad Park, the UAE's first indigenous park. The park contains peaceful shaded areas and is ringed by a 3.2 km jogging track.

### THE POINTE

A waterfront dining and entertainment destination across the bay from Atlantis The Palm, The Pointe features restaurants, shops and attractions as well as a 1.5 km promenade and The Palm Fountain, the world's largest fountain, offering spectacular daily shows.



## CLUB VISTA MARE

Club Vista Mare is a premium waterfront dining and beach club facility, situated just minutes away from The Palm Tower, featuring upscale restaurants, with indoor and outdoor seating, offering a variety of cuisines.

## THE BOARDWALK

Stretching along the entire length of Palm Jumeirah's crescent, The Boardwalk is a vibrant destination for jogging, walking or sightseeing and offers stunning views of the Arabian Gulf.

## MARINAS

Palm Jumeirah has a number of state-of-the-art marinas for boats of various types and sizes, offering the perfect mooring space conveniently close to The Palm Tower Residences.

## PALM WEST BEACH

Palm West Beach, located nearby, is a walkable waterfront destination for all-day entertainment, with water sports, a range of premium hotels and restaurants, and the best Dubai skyline views. Palm West Beach is home to 300 illuminating palm trees and is a pet friendly destination that stretches across 1.6km of promenade and beachfront.



REALTY

For more information  
Call at +971 50 963 4096  
visit [edgerealty.ae](http://edgerealty.ae)